

astro

PHOTOMETRIC
TEST REPORT

Light efficiency:

49 Lumen/Watt

Light quality:

CRI: 80.3

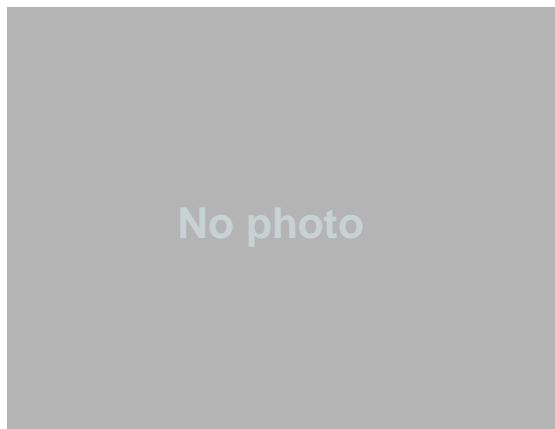
Color temperature:

2717 K

Output: 166 lm
Peak: 1115 cd

Power: 3.4 W
PF: 0.58

12 PLANES

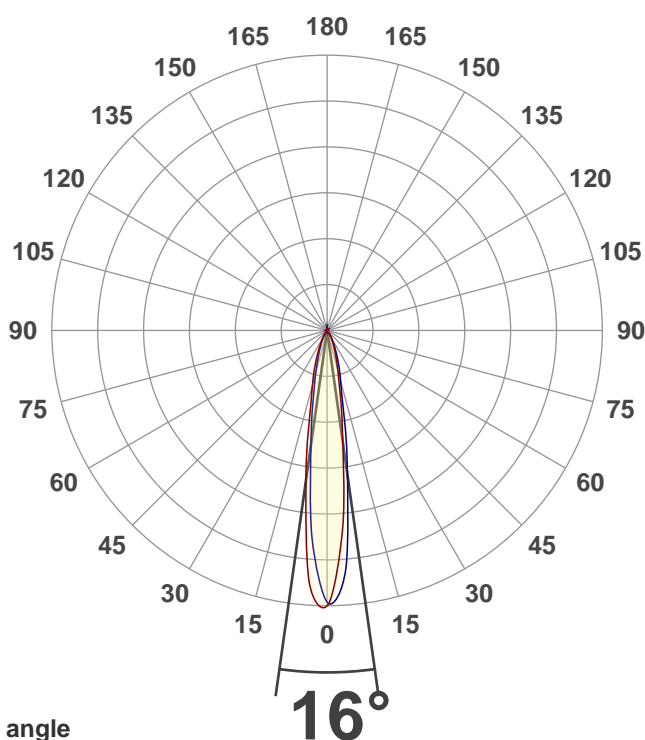


Product name:

L17947 Astro

Date and time:

30/10/2018 15:09:22



Color

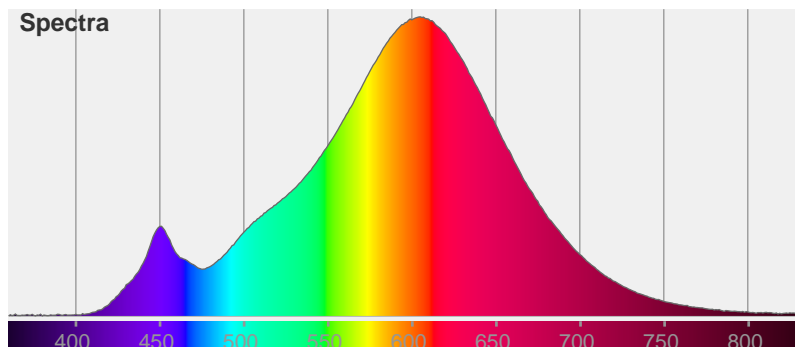


CIE1931

x: 0.462

y: 0.416

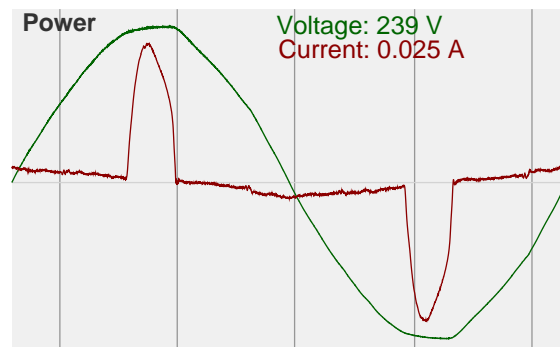
Spectra

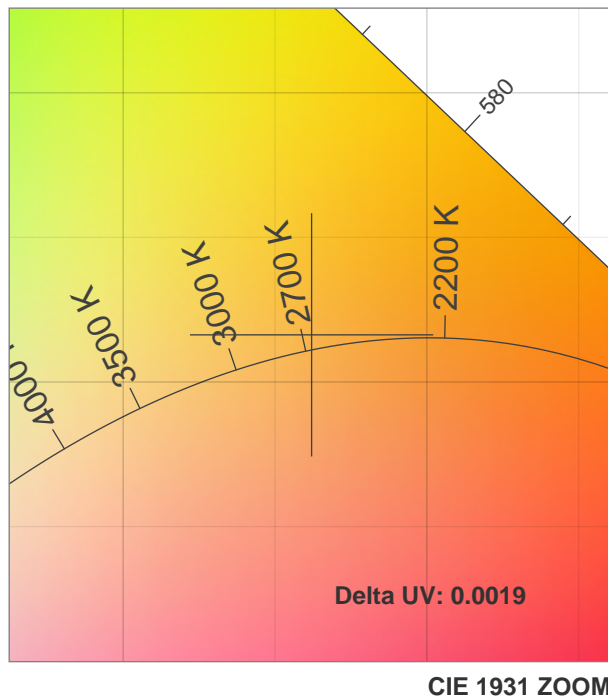
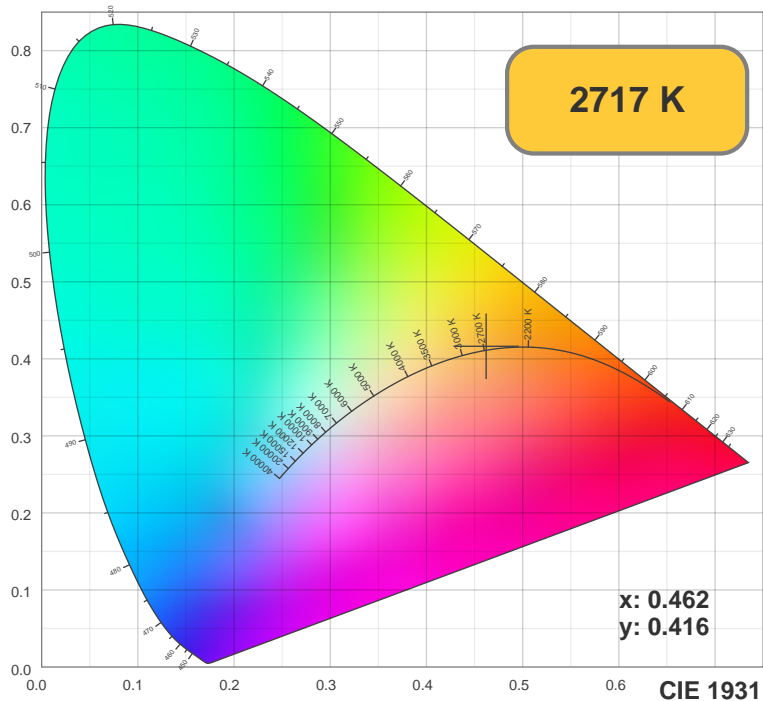


Power

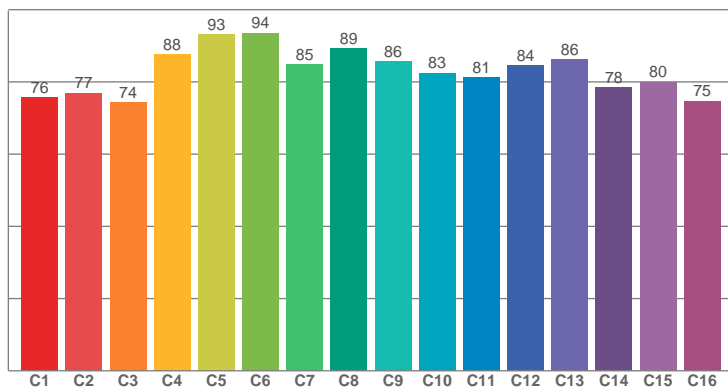
Voltage: 239 V

Current: 0.025 A

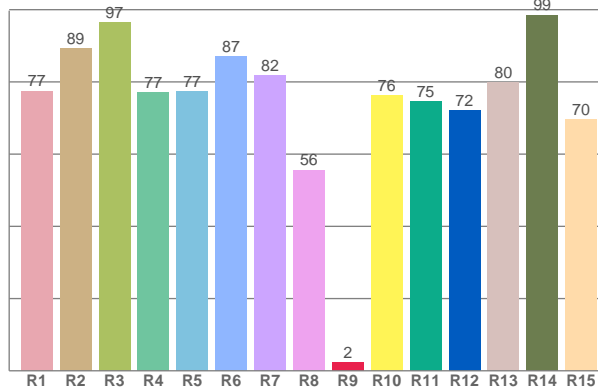




TM30: 82.8



CRI: 80.3 (R1-R8)



CRI R values, only R1-R8 are used to calculate final CRI value

R1	R2	R3	R4	R5	R6	R7	R8	R9	R10	R11	R12	R13	R14	R15
77.47	89.23	96.55	77.00	77.35	86.96	81.88	55.63	2.34	76.24	74.59	72.09	79.83	98.55	69.65

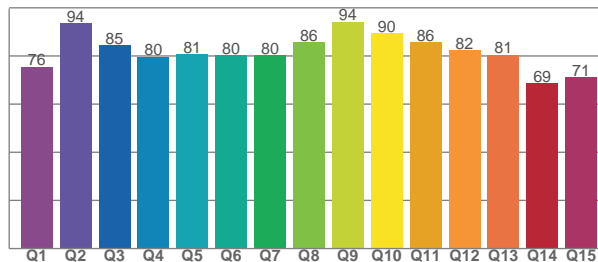
TM30 C values, 16 binned values out of total of 99 C values

C1	C2	C3	C4	C5	C6	C7	C8	C9	C10	C11	C12	C13	C14	C15	C16
75.64	76.95	74.38	87.60	93.23	93.53	84.83	89.29	85.69	82.51	81.27	84.49	86.21	78.40	79.97	74.77

CQS Q values

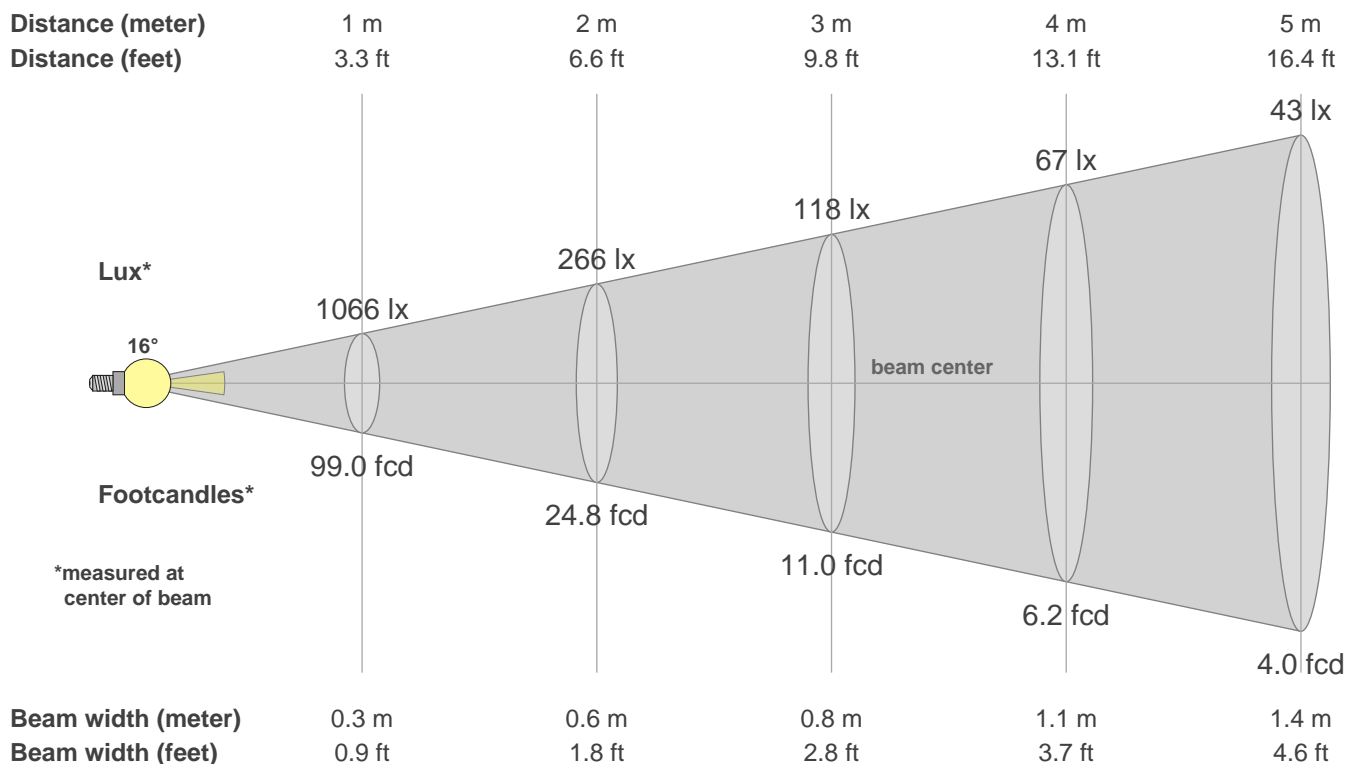
Q1	Q2	Q3	Q4	Q5	Q6	Q7	Q8	Q9	Q10	Q11	Q12	Q13	Q14	Q15
75.57	93.70	84.54	79.75	80.67	80.38	80.41	85.69	94.26	89.58	85.58	82.34	80.55	68.83	71.22

CQS: 80.7



Color parameters

CCT	CRI	CRI R9	TM30 Rf	TM30 Rg	CQS	x	y	u	v	Duv
2717 K	80.3	2.3	82.8	94.1	80.7	0.5	0.4	0.3	0.4	0.0019



Intensities in 0° c-plane

0°	2°	4°	6°	8°	10°	12°	14°	16°	18°	20°	22°	24°	26°	28°	30°	32°	34°	36°	38°
1066	969	825	657	477	344	259	190	153	117	95	73	59	46	36	27	21	15	11	9
100%	91%	77%	62%	45%	32%	24%	18%	14%	11%	9%	7%	6%	4%	3%	3%	2%	1%	1%	1%

Intensities in 90° c-plane

0°	2°	4°	6°	8°	10°	12°	14°	16°	18°	20°	22°	24°	26°	28°	30°	32°	34°	36°	38°
1066	1030	969	803	603	448	326	236	194	156	127	99	79	60	47	35	27	20	15	12
100%	97%	91%	75%	57%	42%	31%	22%	18%	15%	12%	9%	7%	6%	4%	3%	3%	2%	1%	1%

Intensities in 180° c-plane

0°	2°	4°	6°	8°	10°	12°	14°	16°	18°	20°	22°	24°	26°	28°	30°	32°	34°	36°	38°
1066	1047	1008	815	616	470	339	258	209	167	134	103	81	59	47	35	27	19	14	11
100%	98%	95%	76%	58%	44%	32%	24%	20%	16%	13%	10%	8%	6%	4%	3%	2%	2%	1%	1%

Intensities in 270° c-plane

0°	2°	4°	6°	8°	10°	12°	14°	16°	18°	20°	22°	24°	26°	28°	30°	32°	34°	36°	38°
1066	958	838	662	479	361	268	202	158	121	95	72	58	44	34	25	19	14	10	8
100%	90%	79%	62%	45%	34%	25%	19%	15%	11%	9%	7%	5%	4%	3%	2%	2%	1%	1%	1%

Beam angle 50%	Field angle 10%	Cutoff angle 2.5%	Intensity ratio in 120° cone	Intensity ratio in 90° cone
16.0°	40.8°	61.8°	97.1%	96.2%