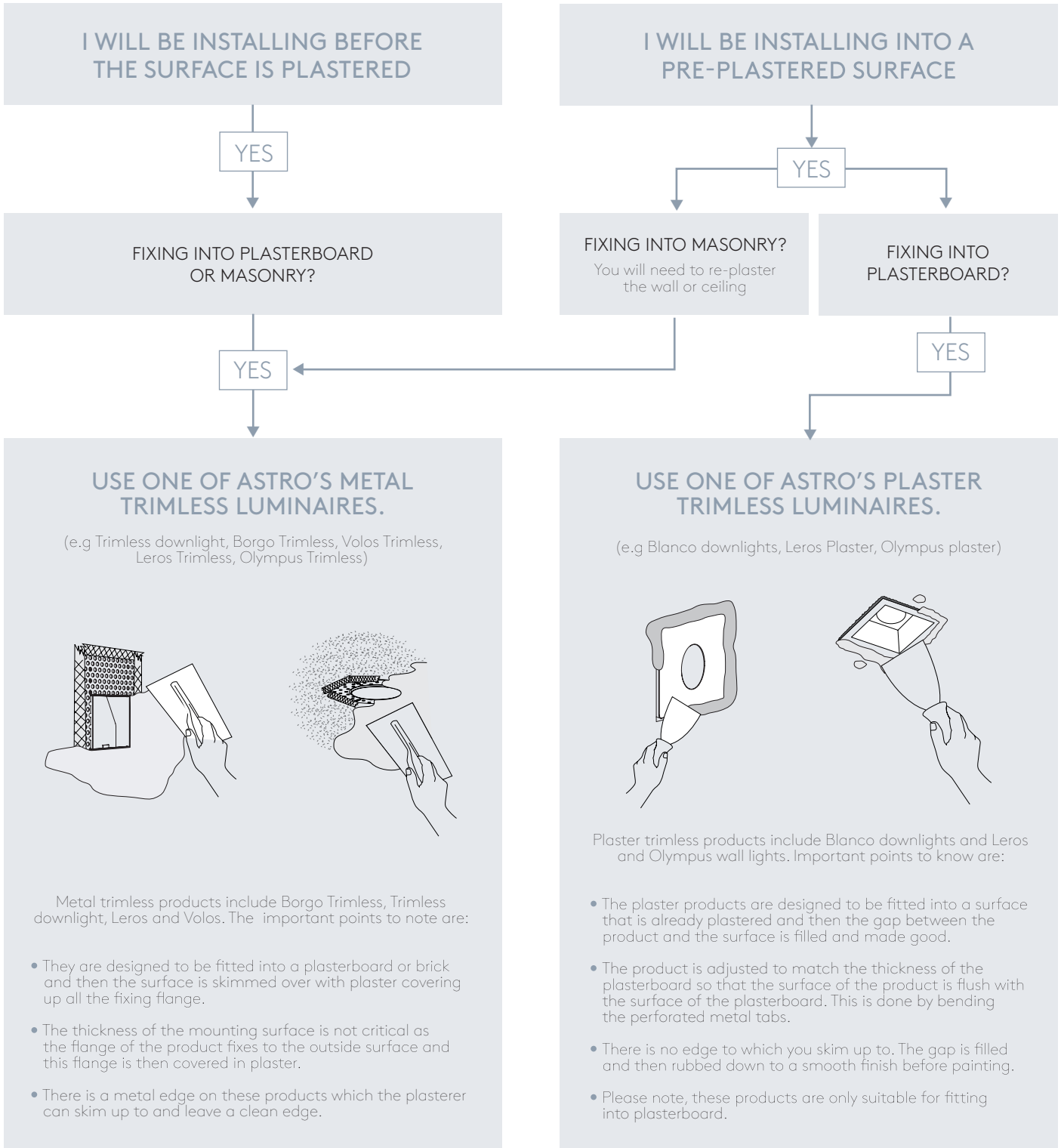


# WHICH TYPE OF TRIMLESS PRODUCT DO I NEED?



I WILL BE INSTALLING BEFORE THE SURFACE IS PLASTERED

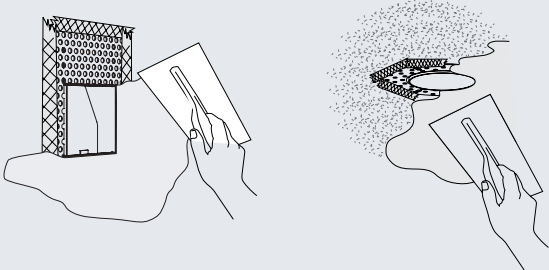
YES

FIXING INTO PLASTERBOARD OR MASONRY?

YES

## USE ONE OF ASTRO'S METAL TRIMLESS LUMINAIRES.

(e.g Trimless downlight, Borgo Trimless, Volos Trimless, Leros Trimless, Olympus Trimless)



Metal trimless products include Borgo Trimless, Trimless downlight, Leros and Volos. The important points to note are:

- They are designed to be fitted into a plasterboard or brick and then the surface is skimmed over with plaster covering up all the fixing flange.
- The thickness of the mounting surface is not critical as the flange of the product fixes to the outside surface and this flange is then covered in plaster.
- There is a metal edge on these products which the plasterer can skim up to and leave a clean edge.

I WILL BE INSTALLING INTO A PRE-PLASTERED SURFACE

YES

FIXING INTO MASONRY?

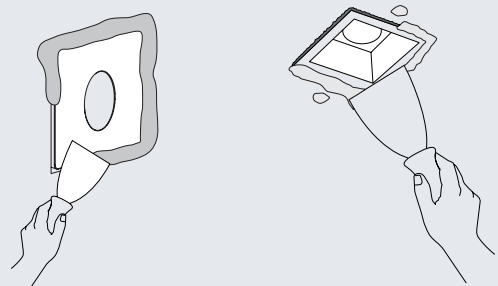
You will need to re-plaster the wall or ceiling

FIXING INTO PLASTERBOARD?

YES

## USE ONE OF ASTRO'S PLASTER TRIMLESS LUMINAIRES.

(e.g Blanco downlights, Leros Plaster, Olympus plaster)



Plaster trimless products include Blanco downlights and Leros and Olympus wall lights. Important points to know are:

- The plaster products are designed to be fitted into a surface that is already plastered and then the gap between the product and the surface is filled and made good.
- The product is adjusted to match the thickness of the plasterboard so that the surface of the product is flush with the surface of the plasterboard. This is done by bending the perforated metal tabs.
- There is no edge to which you skim up to. The gap is filled and then rubbed down to a smooth finish before painting.
- Please note, these products are only suitable for fitting into plasterboard.

There are full installation instructions supplied with the products, they are available online at:

[www.astrolighting.com](http://www.astrolighting.com)